



OVER 60?

Secure this property
for up to **59% less!**



Video Tour available

Price

£230,000

Freehold

3x 1x 2x

**Yarborough Terrace, St.
Johns Road, Wroxall,
Ventnor, Isle of Wight,
PO38**

Pittis
Helping you move forwards



Main features

- Stunning countryside views
- Close to Wroxall Primary School
- Perfect location for taking long strolls in the countryside
- Close to convenience store
- Rear garden where you can entertain family and friends in the summer

Accommodation

GROUND FLOOR

Hallway

Lounge: 12'9 x 12'1 (3.89m x 3.69m)

Dining Room: 10'6 x 10'3 (3.20m x 3.13m)

Kitchen: 15'3 x 9'8 (4.65m x 2.95m)

FIRST FLOOR

Landing

Bedroom 1: 10'8 x 10'3 (3.25m x 3.13m)

Bedroom 2: 12'1 x 9'7 (3.69m x 2.92m)

Bedroom 3: 8'7 x 6'5 (2.62m x 1.96m)

Separate Toilet

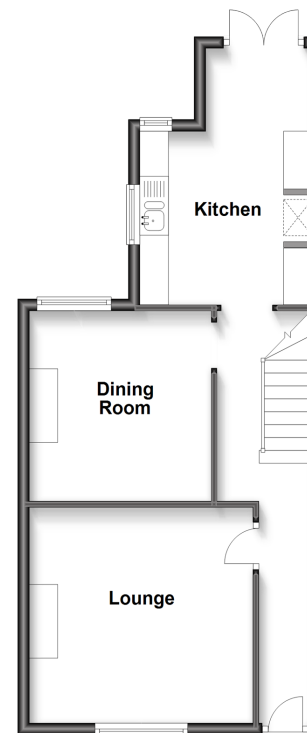
Shower Room

OUTSIDE

Rear Garden

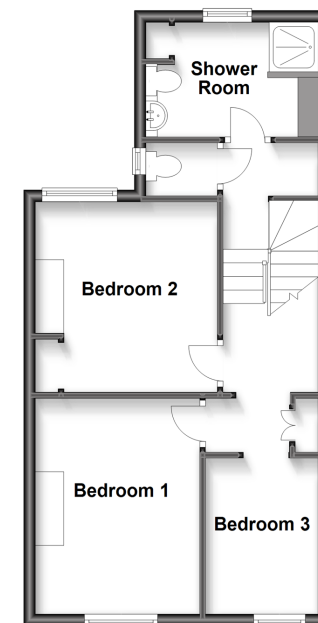
Ground Floor

Approx. 46.4 sq. metres (499.2 sq. feet)



First Floor

Approx. 43.8 sq. metres (471.0 sq. feet)



Call Ventnor - 01983 856417 ■ pittis.co.uk

- Legal advice should be taken to verify fixtures/fittings, planning, alterations and/or lease details
- Appliances & services are untested, dimensions are approximate and floor plans are not to scale
- Through a Homewise Home For Life Plan people aged 60+ can secure this property for up to 59% less, by purchasing a Lifetime Lease.



60801502/20221102/JP/AP