

OVER 60?

Secure this property
for up to **59% less!**



Price
£350,000
Freehold

2x  1x  2x 

Greenlydd Close, Niton, Ventnor, Isle of
Wight, PO38

Pittis 
Helping you move forwards



Main features

- Set in a peaceful & popular position
- The convenience of a self-contained Village location
- Beautiful wrap around garden
- Useful dining space that overlooks the gardens
- Garage & driveway parking

Accommodation

GROUND FLOOR

Hallway

Lounge : 17'4 x 11'0 (5.29m x 3.36m)

Dining Room: 14'6 x 7'8 (4.42m x 2.34m)

Kitchen: 13'7 x 7'9 (4.14m x 2.36m)

Bedroom 1: 13'7 x 9'7 (4.14m x 2.92m)

Bedroom 2: 13'4 x 8'0 (4.07m x 2.44m)

Shower Room

OUTSIDE

Rear Garden

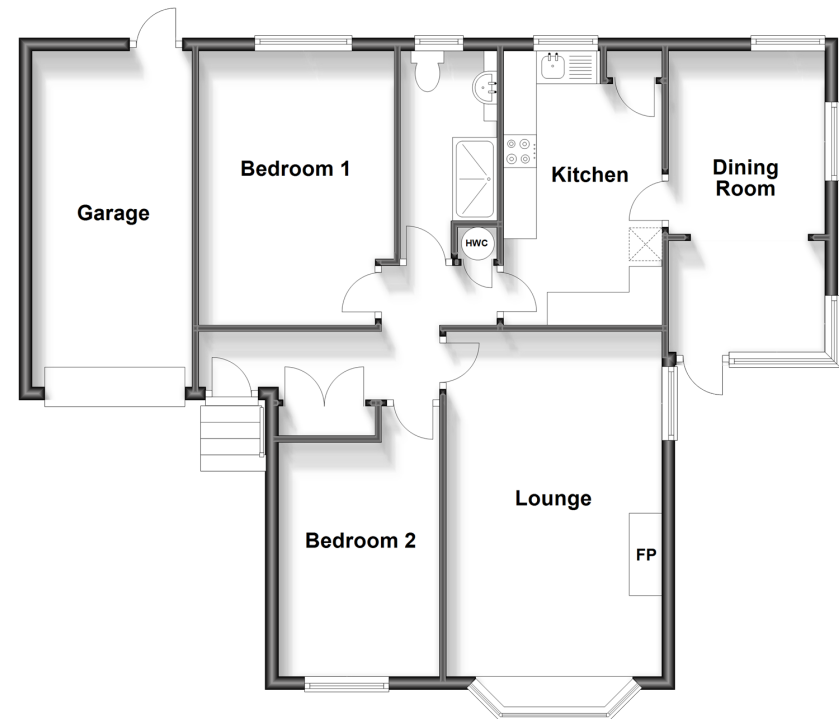
Front Garden

Garage

Driveway

Ground Floor

Approx. 86.3 sq. metres (929.3 sq. feet)



Call Ventnor - 01983 856417 ■ pittis.co.uk

■ Legal advice should be taken to verify fixtures/fittings, planning, alterations and/or lease details
 ■ Through a Homewise Home For Life Plan people aged 60+ can secure this property for up to 59% less, by purchasing a Lifetime Lease.

■ Appliances & services are untested, dimensions are approximate and floor plans are not to scale