



Price
£330,000

Freehold

4x  1x  2x 

**Primrose Villas,
Kemming Road,
Whitwell, Isle of Wight,
PO38**



Video Tour available

Pittis 
Helping you move forwards



Main features

- Charming quaint character home
- With a lovely log burner
- Positioned nicely in a rural location in Whitwell where you can enjoy lovely long strolls
- Allocated parking
- Front garden and rear courtyard garden

Accommodation

GROUND FLOOR

Lounge/Dining Room: 18'5 x 13'7 (5.62m x 4.14m)

Kitchen: 12'1 x 8'0 (3.69m x 2.44m)

Snug: 10'1 x 9'8 (3.08m x 2.95m)

FIRST FLOOR

Landing

Bedroom 1: 10'0 x 9'7 (3.05m x 2.92m)

Bedroom 2: 8'7 x 8'2 (2.62m x 2.49m)

Bedroom 3: 8'4 x 8'0 (2.54m x 2.44m)

Bathroom

Bedroom 4: 10'0 x 9'9 (3.05m x 2.97m)

OUTSIDE

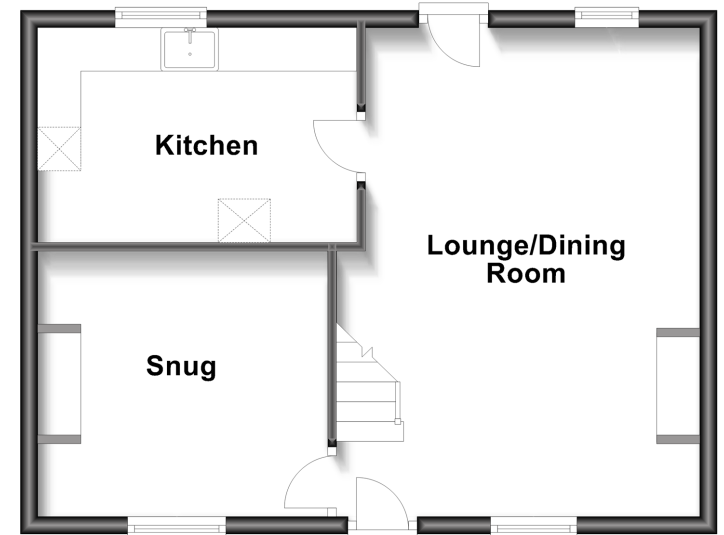
Allocated Parking

Front Garden

Courtyard Rear Garden

Ground Floor

Approx. 43.0 sq. metres (462.6 sq. feet)



First Floor

Approx. 43.0 sq. metres (462.6 sq. feet)



Call Ventnor - 01983 856417 ■ pittis.co.uk

- Legal advice should be taken to verify fixtures/fittings, planning, alterations and/or lease details
- Appliances & services are untested, dimensions are approximate and floor plans are not to scale



60801664/20230106/AP/AP