



Price

£425,000

Freehold

2x  1x  1x 

**Undercliff Gardens,
Ventnor, Isle of Wight,
PO38**

OVER 60?

Secure this property
for up to **59% less!**



Video Tour available

Pittis 
Helping you move forwards



Main features

- **Stunning panoramic sea views**
- **Wrap around garden that catches the sun**
- **Off-road parking with garage**
- **Close to the Ventnor Botanical Gardens**
- **Sought after location**

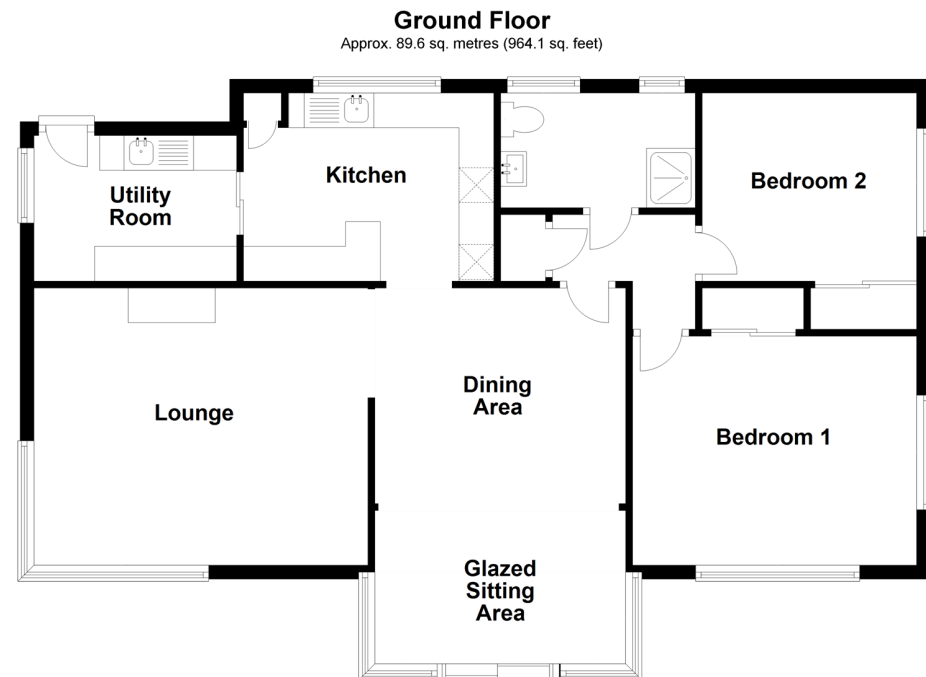
Accommodation

GROUND FLOOR

Dining Area : 11'7 x 10'1 (3.53m x 3.08m)
 Glazed Sitting Area: 10'8 x 7'2 (3.25m x 2.19m)
 Lounge: 16'2 x 13'2 (4.93m x 4.02m)
 Kitchen : 11'9 x 8'8 (3.58m x 2.64m)
 Utility Room: 9'5 x 6'8 (2.87m x 2.03m)
 Bedroom 1: 13'5 x 11'1 (4.09m x 3.38m)
 Bedroom 2: 10'1 x 8'8 (3.08m x 2.64m)
 Shower Room

OUTSIDE

Garage
 Wrap-around Garden



Call Ventnor - 01983 856417 ■ pittis.co.uk

■ Legal advice should be taken to verify fixtures/fittings, planning, alterations and/or lease details
 ■ Through a Homewise Home For Life Plan people aged 60+ can secure this property for up to 59% less, by purchasing a Lifetime Lease.

■ Appliances & services are untested, dimensions are approximate and floor plans are not to scale