



OVER 60?

Secure this property
for up to **59% less!**

Price
£235,000

Freehold

2x  1x  2x 

**West Street, Ventnor,
Isle of Wight, PO38**

Pittis 
Helping you move forwards



Main features

- Period end of terraced house in village location
- Open plan lounge/dining area with log burning stove
- Pretty rear garden with separate utility shed
- Ideal first time purchase or buy to let investment
- Close to country walks

Accommodation

GROUND FLOOR

Hallway

Dining Area: 13'7 x 11'4 (4.14m x 3.46m)

Lounge: 13'7 x 11'7 (4.14m x 3.53m)

Kitchen: 12'4 x 8'6 (3.76m x 2.59m)

FIRST FLOOR

Landing

Bedroom 1: 13'7 x 11'10 (4.14m x 3.61m)

Bedroom 2: 11'10 x 9'1 (3.61m x 2.77m)

Bathroom

OUTSIDE

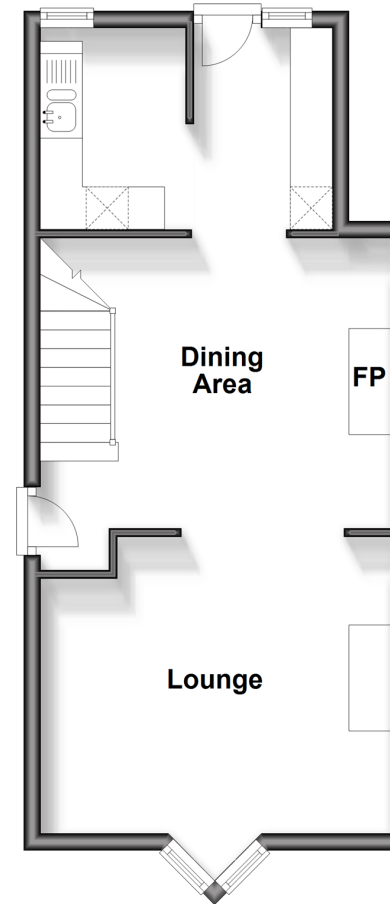
Front Garden

Rear Garden

Shed

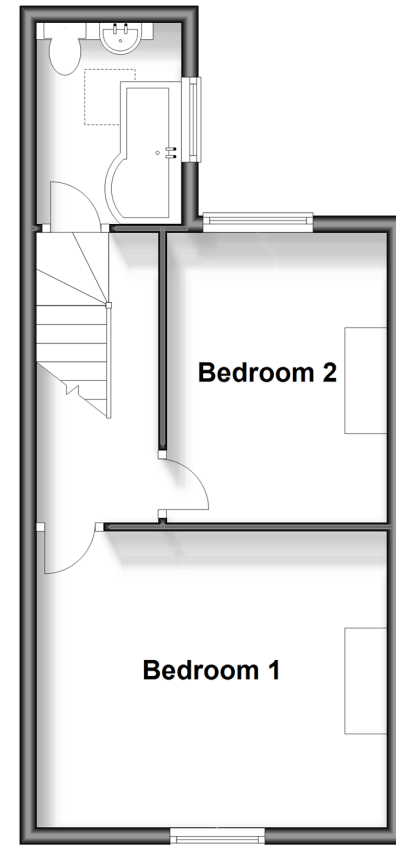
Ground Floor

Approx. 38.2 sq. metres (411.1 sq. feet)



First Floor

Approx. 33.6 sq. metres (361.2 sq. feet)



Call Ventnor - 01983 856417 ■ pittis.co.uk

- Legal advice should be taken to verify fixtures/fittings, planning, alterations and/or lease details
- Appliances & services are untested, dimensions are approximate and floor plans are not to scale
- Through a Homewise Home For Life Plan people aged 60+ can secure this property for up to 59% less, by purchasing a Lifetime Lease.



60801818/20240420/SC1/EP