



**Price**

**£550,000**

**Freehold**

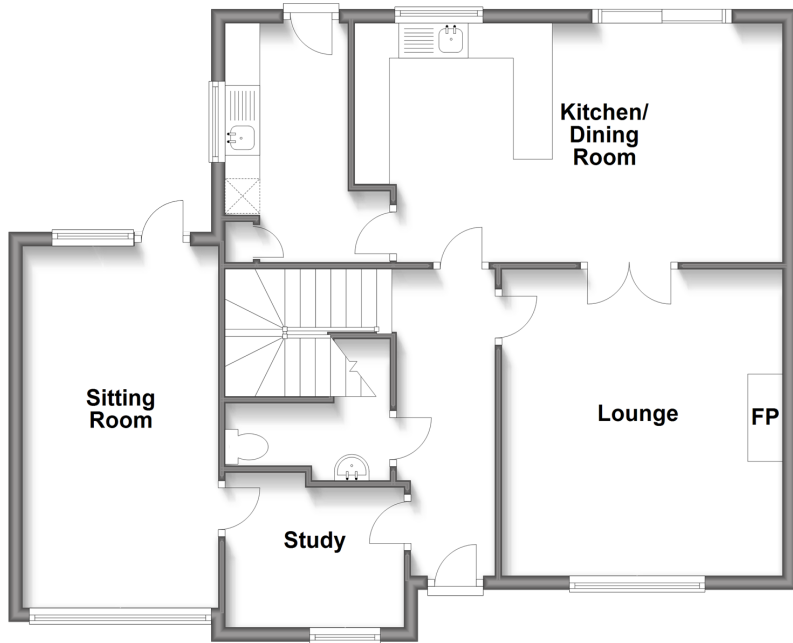
4x  3x  2x 

**Newport Road, Niton,  
Isle of Wight, PO38**

**Pittis**   
Helping you move forwards

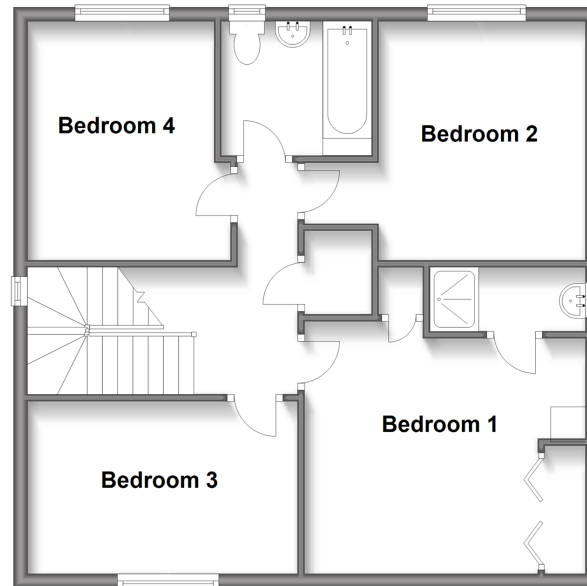
## Ground Floor

Approx. 80.5 sq. metres (866.7 sq. feet)



## First Floor

Approx. 63.5 sq. metres (683.4 sq. feet)



## Accommodation

### GROUND FLOOR

Hallway

Kitchen/Dining Room: 15'11 x 11'4 (4.85m x 3.46m)

Utility Room : 11'4 x 5'8 (3.46m x 1.73m)

Lounge : 14'4 x 12'5 (4.37m x 3.79m)

Study : 8'2 x 6'6 (2.49m x 1.98m)

Sitting Room: 17'7 x 9'3 (5.36m x 2.82m)

Cloakroom

### FIRST FLOOR

Landing

Bedroom 1: 12'5 x 11'7 (3.79m x 3.53m)

Bedroom 2: 12'7 x 11'9 (3.84m x 3.58m)

Bedroom 3: 12'7 x 8'1 (3.84m x 2.47m)

Bedroom 4: 11'1 x 9'5 (3.38m x 2.87m)

Bathroom

### OUTSIDE

Decked Area

Rear Garden

Front Garden

Driveway





## Main features

- Beautiful detached house in a village location
- Garage currently converted to living accommodation
- Panoramic countryside views
- Good sized sunny rear garden, natural light, generous room sizes
- Lovely log burner and an open-plan kitchen/dining area



### Nearest Schools

Niton Primary School, Niton



### Transport Information

Local buses providing Islandwide cover



### Address

Newport Road, Niton, Isle of Wight, PO38



### Directions

For directions to this property please contact us.



