



Price
£325,000

Freehold

2x  1x  1x 

**Puckwell Farm, High
Street, Niton, Isle of
Wight, PO38**

OVER 60?

Secure this property
for up to **59% less!**



Video Tour available

Pittis 
Helping you move forwards



Main features

- Modern built mews style home
- Contemporary meets charm
- Positioned in Niton Village;
- Private parking
- Beautiful enclosed garden, perfect for al fresco dining
- Surrounded by a stunning rural backdrop

Accommodation

GROUND FLOOR

Hallway

Shower Room

Bedroom 1: 13'7 x 12'1 (4.14m x 3.69m)

Bedroom 2: 16'6 x 10'9 (5.03m x 3.28m)

Kitchen/Living Room: 17'9 x 15'7 (5.41m x 4.75m)

OUTSIDE

Owned Parking

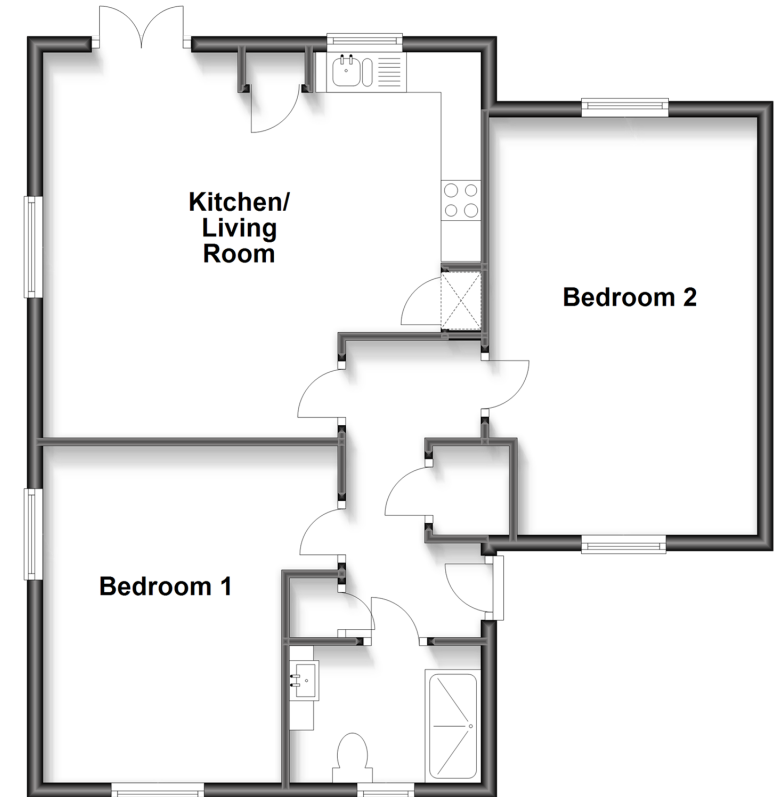
Visitors Parking

Front Garden

Rear Garden

Ground Floor

Approx. 67.8 sq. metres (729.7 sq. feet)



Call Ventnor - 01983 856417 ■ pittis.co.uk

- Legal advice should be taken to verify fixtures/fittings, planning, alterations and/or lease details
- Appliances & services are untested, dimensions are approximate and floor plans are not to scale
- Through a Homewise Home For Life Plan people aged 60+ can secure this property for up to 59% less, by purchasing a Lifetime Lease.



60801994/20230628/Jp/AP