



OVER 60?

Secure this property
for up to **59% less!**

Price

£180,000

Freehold

3x  1x  2x 

**Newport Road, Ventnor,
Isle of Wight, PO38**

Pittis 
Helping you move forwards



Main features

- Good living space to socialise,
- Great sized rear garden, perfect for barbecues,
- Close to schools & on a regular bus route
- Benefiting from off road parking,
- Offered with no onward chain

Accommodation

GROUND FLOOR

Lounge : 12'8 x 11'9 (3.86m x 3.58m)

Dining Room: 12'8 x 11'9 (3.86m x 3.58m)

Kitchen: 11'9 x 6'9 (3.58m x 2.06m)

FIRST FLOOR

Bedroom 1: 12'8 x 11'9 (3.86m x 3.58m)

Bedroom 2: 11'9 x 6'9 (3.58m x 2.06m)

Bedroom 3: 8'0 x 6'10 (2.44m x 2.08m)

Bathroom

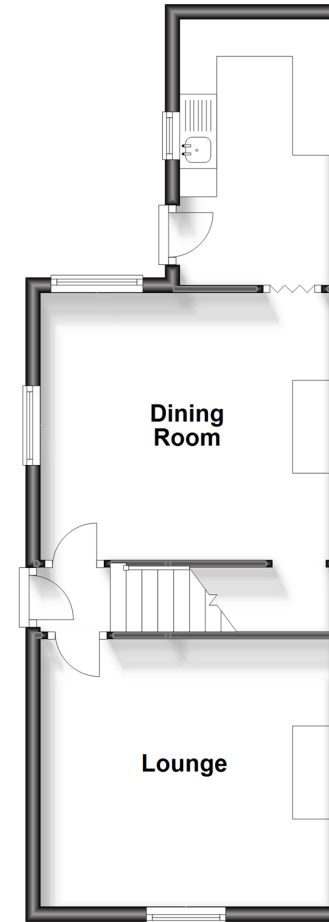
OUTSIDE

Driveway

Rear Garden

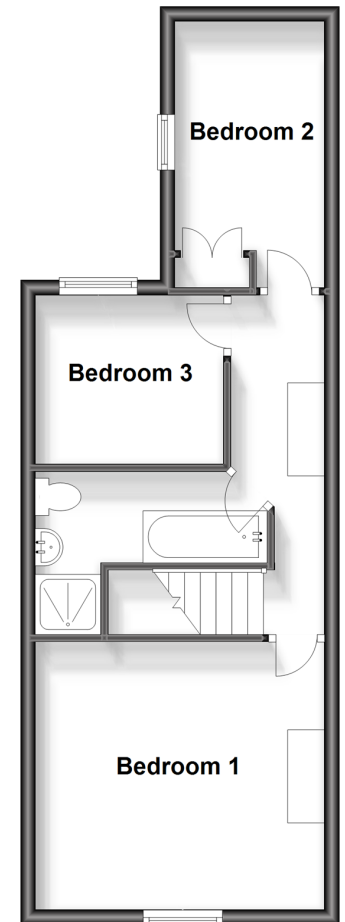
Ground Floor

Approx. 39.8 sq. metres (428.5 sq. feet)



First Floor

Approx. 39.8 sq. metres (428.5 sq. feet)



Call Ventnor - 01983 856417 ■ pittis.co.uk

- Legal advice should be taken to verify fixtures/fittings, planning, alterations and/or lease details
- Appliances & services are untested, dimensions are approximate and floor plans are not to scale
- Through a Homewise Home For Life Plan people aged 60+ can secure this property for up to 59% less, by purchasing a Lifetime Lease.



60802131/20240320/RC/LU