

OVER 60?

Secure this property
for up to **59% less!**



Price
£375,000
Freehold

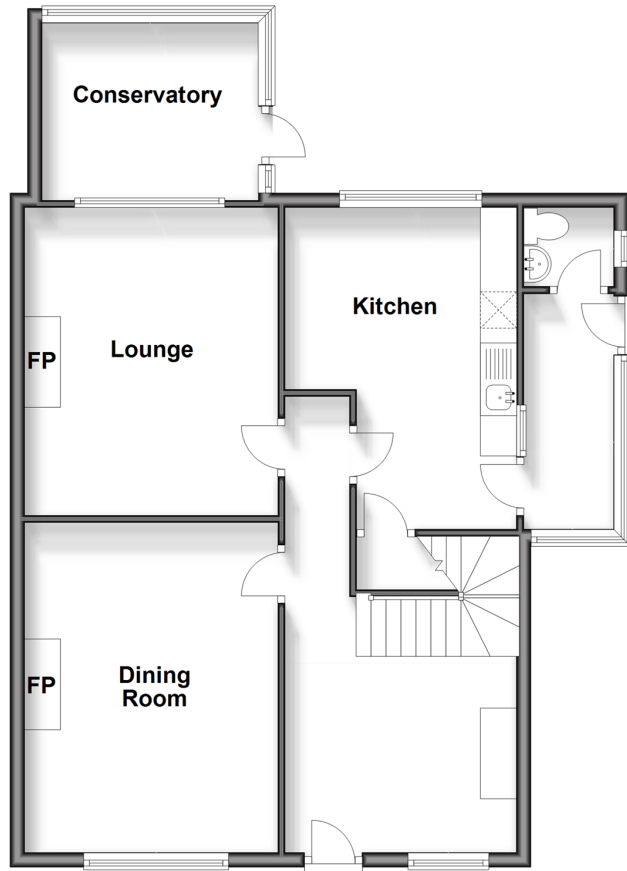
3x  2x  2x 

Blackgang Road, Niton, Ventnor, Isle of
Wight, PO38

Pittis 
Helping you move forwards

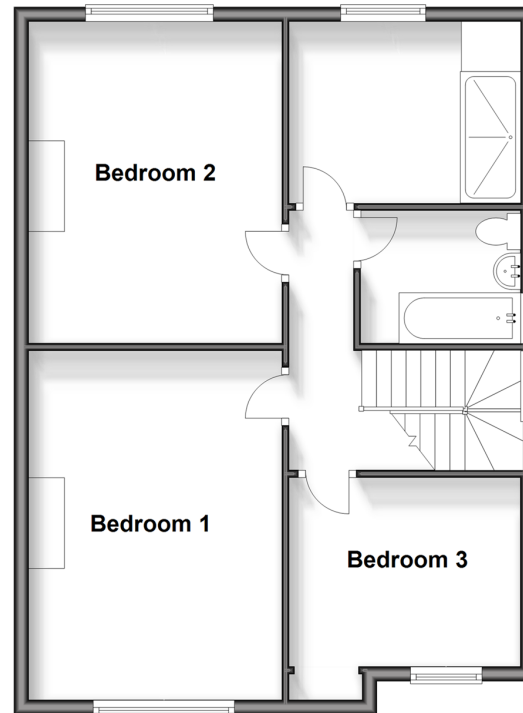
Ground Floor

Approx. 74.1 sq. metres (797.4 sq. feet)



First Floor

Approx. 62.6 sq. metres (674.1 sq. feet)



Accommodation

GROUND FLOOR

Porch

Hallway: 10'5 x 9'2 (3.18m x 2.80m)

Cloakroom

Lounge: 14'10 x 11'7 (4.52m x 3.53m)

Dining Room: 15'6 x 11'7 (4.73m x 3.53m)

Kitchen: 14'3 x 10'7 (4.35m x 3.23m)

Conservatory: 9'9 x 7'5 (2.97m x 2.26m)

FIRST FLOOR

Landing

Bedroom 1: 15'2 x 14'9 (4.63m x 4.50m)

Bedroom 2: 15'9 x 11'6 (4.80m x 3.51m)

Bedroom 3: 10'6 x 8'6 (3.20m x 2.59m)

Shower Room

Bathroom

OUTSIDE

Garage

Driveway

Front & Rear Gardens



Main features

- Semi detached house with stunning rural countryside views
- Fantastic sized garden ideal for growing your own vegetables
- Character interior with log burning stove and attractive features
- Garage and driveway parking
- Ideal family home just moments from the village school, shops and main bus routes



Nearest Schools

Primary Schools:
Ventnor Middle School Lake Middle School

Secondary Schools:
St Catherine's School



Transport Information

Local buses providing Islandwide connections



Address

Blackgang Road, Niton, Ventnor, Isle of Wight, PO38



Directions

For directions to this property please contact us.



Call Ventnor Branch 01983 856417 ■ pittis.co.uk



- Legal advice should be taken to verify fixtures/fittings, planning, alterations and/or lease details
- Appliances & services are untested, dimensions are approximate and floor plans are not to scale
- Through a Homewise Home For Life Plan people aged 60+ can secure this property for up to 59% less, by purchasing a Lifetime Lease.



60802170/20231208/CS/EP