



Price
£150,000

**Share of
Freehold**

2x  1x  1x 

**Westfield Bungalows,
Madeira Road, Ventnor,
Isle of Wight, PO38**

Pittis 
Helping you move forwards



Main features

- End of terraced chalet bungalow
- Can be used as a permanent residence with share of freehold
- Modern bathroom with walk in shower & new kitchen
- End plot with front decking, flower beds & side access
- Chain free sale

Accommodation

GROUND FLOOR

Lounge/Dining Area: 16'3 x 9'7 (4.96m x 2.92m)

Kitchen: 7'10 x 6'10 (2.39m x 2.08m)

Bedroom 1: 11'10 x 7'9 (3.61m x 2.36m)

Bedroom 2: 11'9 x 7'10 (3.58m x 2.39m)

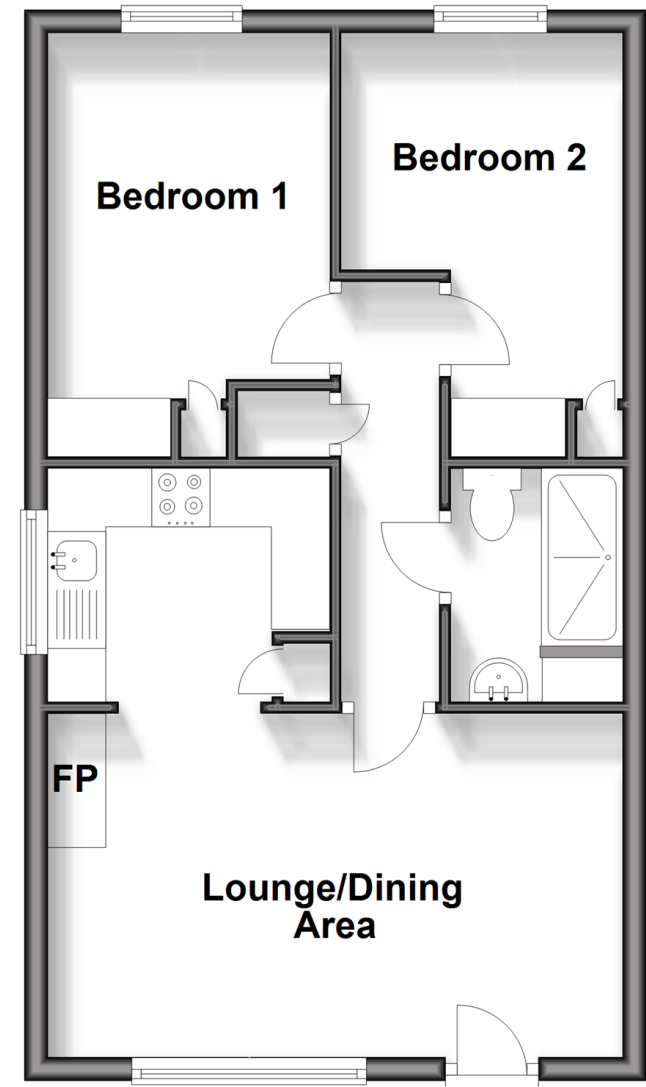
Shower Room

OUTSIDE

Allocated Parking Space
Front Decking Area
Communal Gardens

Ground Floor

Approx. 43.4 sq. metres (466.8 sq. feet)



Call Ventnor - 01983 856417 ■ pittis.co.uk

- If buying to let, the energy rating will need to be improved to at least 'E' rating before you can let the property
- Legal advice should be taken to verify fixtures/fittings, planning, alterations and/or lease details
- Appliances & services are untested, dimensions are approximate and floor plans are not to scale



60802199/20240312/DW/RC