



OVER 60?

Secure this property
for up to **59% less!**

Price

£275,000

Leasehold

3x  1x  1x 

**Durham Cottage,
Beaconsfield Road,
Ventnor, Isle of Wight,
PO38**

Pittis 
Helping you move forwards



Main features

- **Gorgeous cottage in the heart of Ventnor**
- **Recently modernised & Immaculately presented**
- **Sea views throughout**
- **Beautiful rear garden**
- **Moments from the beach, shops & amenities**

Accommodation

GROUND FLOOR

Hallway

Lounge: 14'5 x 10'10 (4.40m x 3.30m)

Dining Room: 10'6 x 9'7 (3.20m x 2.92m)

Kitchen: 13'2 x 7'9 (4.02m x 2.36m)

Cloakroom

FIRST FLOOR

Landing

Bedroom 1: 14'3 x 10'10 (4.35m x 3.30m)

Bedroom 2: 11'1 x 7'9 (3.38m x 2.36m)

Bedroom 3: 8'1 x 7'4 (2.47m x 2.24m)

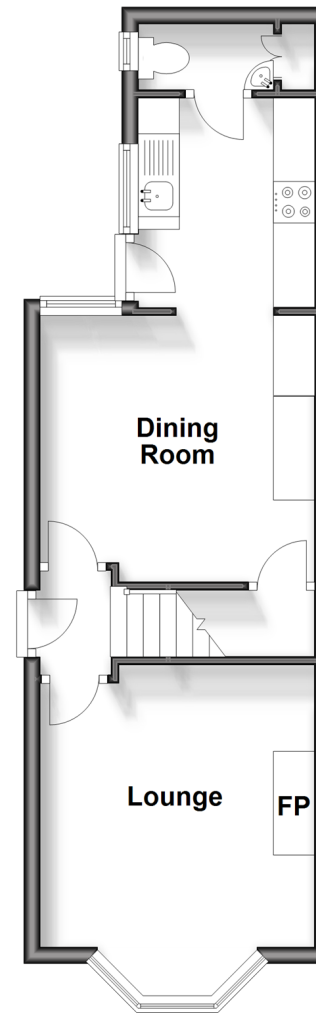
Bathroom

OUTSIDE

Front & Rear Gardens

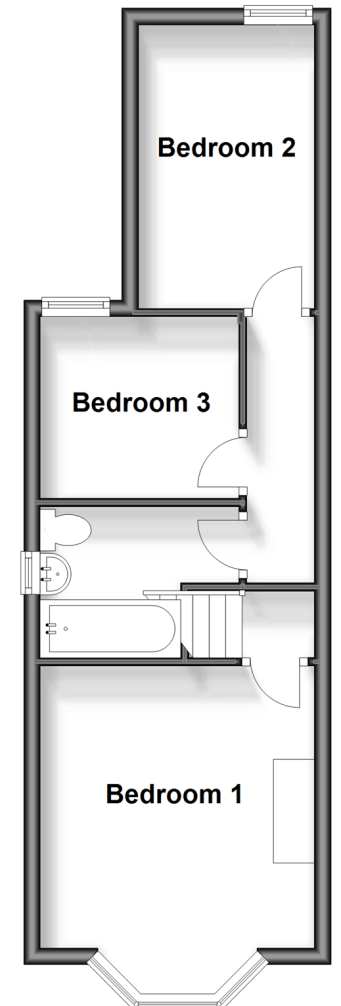
Ground Floor

Approx. 33.2 sq. metres (357.0 sq. feet)



First Floor

Approx. 33.2 sq. metres (357.1 sq. feet)



Call Ventnor - 01983 856417 ■ pittis.co.uk

- Legal advice should be taken to verify fixtures/fittings, planning, alterations and/or lease details
- Appliances & services are untested, dimensions are approximate and floor plans are not to scale
- Through a Homewise Home For Life Plan people aged 60+ can secure this property for up to 59% less, by purchasing a Lifetime Lease.



60802201/20240417/SC/RC