



**Price**  
**£475,000**  
**Freehold**

3x  2x  3x 

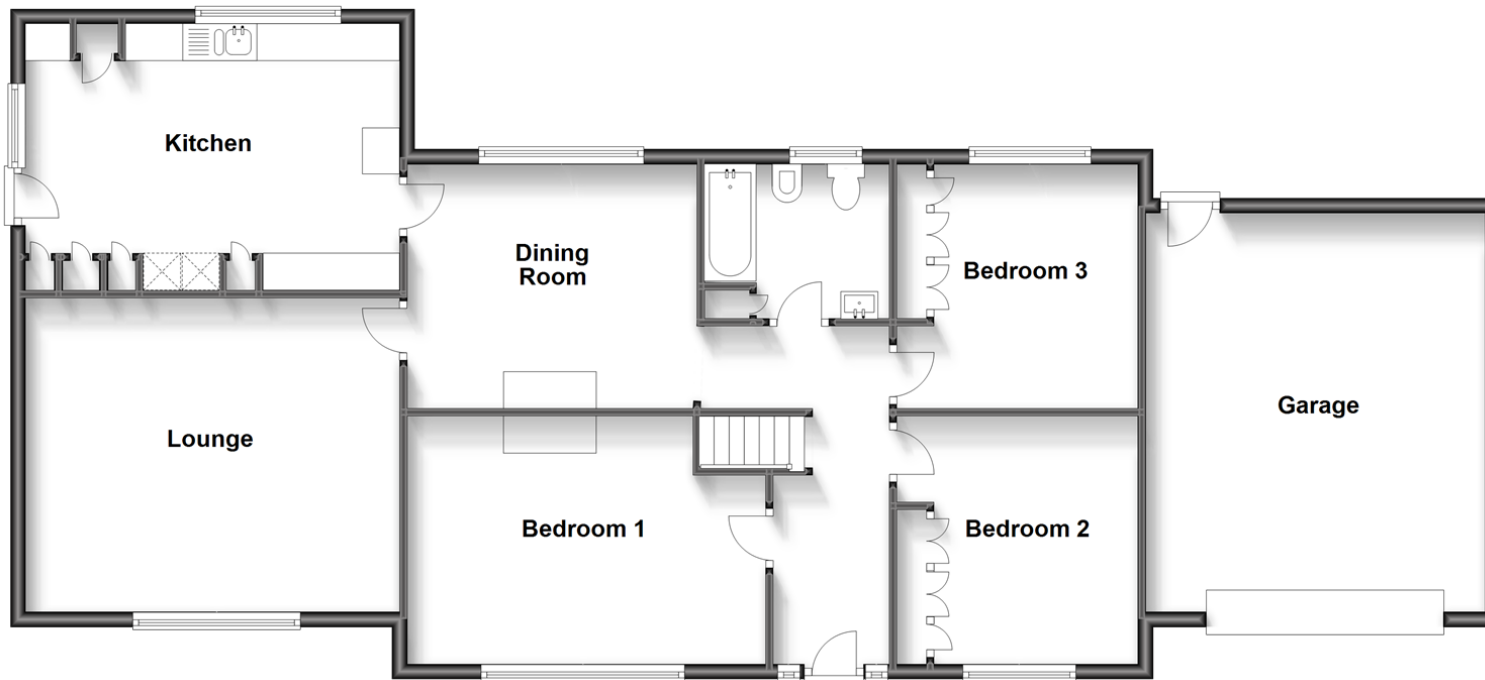
Solent Road, Cranmore, Yarmouth, Isle of  
Wight, PO41

**Pittis**   
Helping you move forwards



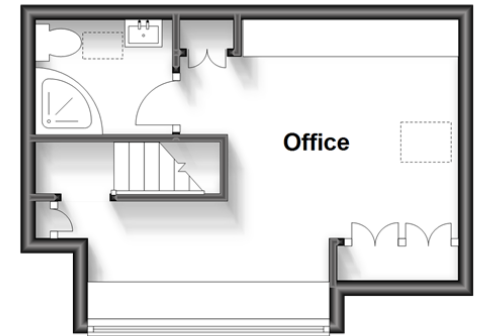
### Ground Floor

Approx. 132.6 sq. metres (1426.9 sq. feet)



### First Floor

Approx. 21.4 sq. metres (230.3 sq. feet)



## Accommodation

### GROUND FLOOR

Bedroom 1: 15'10 x 11'2 (4.83m x 3.41m)

Bedroom 2: 11'0 x 10'9 (3.36m x 3.28m)

Bedroom 3: 10'10 x 10'10 (3.30m x 3.30m)

Bathroom : 8'0 x 6'1 (2.44m x 1.86m)

Dining Room : 12'10 x 10'10 (3.91m x 3.30m)

Lounge : 16'6 x 13'11 (5.03m x 4.24m)

Kitchen : 16'0 x 11'9 (4.88m x 3.58m)

### FIRST FLOOR

Shower Room: 6'2 x 5'1 (1.88m x 1.55m)

Office: 11'10 x 8'10 (3.61m x 2.69m)

### OUTSIDE

Front and Rear Gardens  
Garage



## Main features

- Large versatile bungalow offering multi-generational living
- Countryside location with footpaths leading to the sea
- Central heated and fully double glazed
- Garage and off-road parking
- Manageable front and rear gardens



### Nearest Schools

St. Saviour's Catholic Primary School  
Freshwater and Yarmouth C of E Primary School  
Christ the King College, Newport  
Carisbrooke College, Newport  
Isle of Wight College, Newport



### Transport Information

There is a local bus service to all parts of the Island including the ferry terminus at Yarmouth.



### Address

Solent Road, Cranmore, Yarmouth, Isle of Wight, PO41



### Directions

For directions to this property please contact us.





Call Freshwater Branch 0183 756222 ■ [pittis.co.uk](https://pittis.co.uk)



- If buying to let, the energy rating will need to be improved to at least 'E' rating before you can let the property
- Appliances & services are untested, dimensions are approximate and floor plans are not to scale

- Legal advice should be taken to verify fixtures/fittings, planning, alterations and/or lease details



60902193/20240222/CG/CG