



£325,000
Freehold

Steyne Road, Bembridge, Isle of Wight,
PO35

Steyne Road, Bembridge, Isle of Wight,
PO35

10.1 miles from Fishbourne to Portsmouth Ferry
8.2 miles from Ryde Catamaran & Hover Travel
14.2 miles from East Cowes to Southampton Ferry

Situated on the outskirts of Bembridge village we are pleased to offer a pair of brand new, new build semi detached houses, offering the choice of either a three bedroom house or a two bedroom house.

A pair of brand new - new build semi detached houses

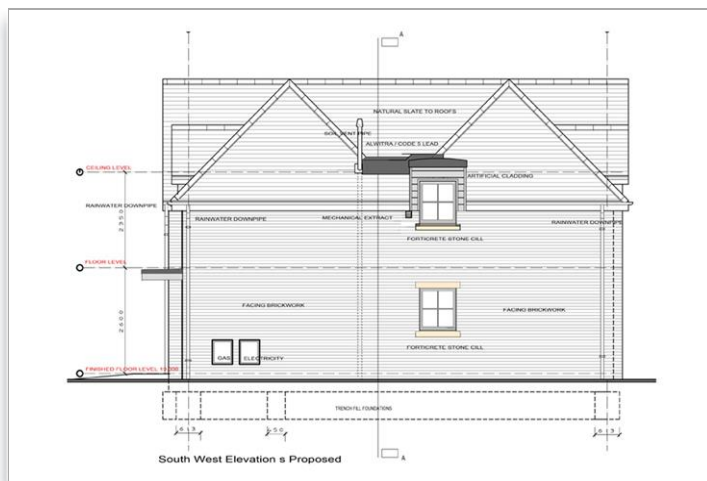
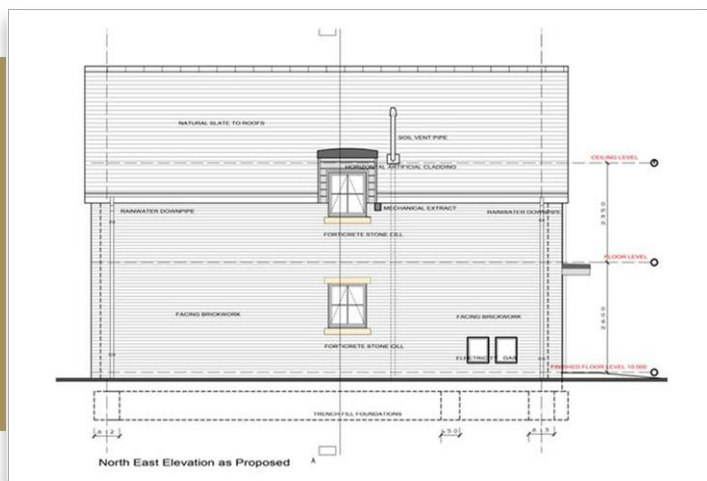
Off road parking to each property

Good sized enclosed rear gardens

Walking distance to the village, restaurants and beach

Ideal investment opportunity

Perfect for use as a holiday home or retreat





South East Elevation (Rear) as Proposed

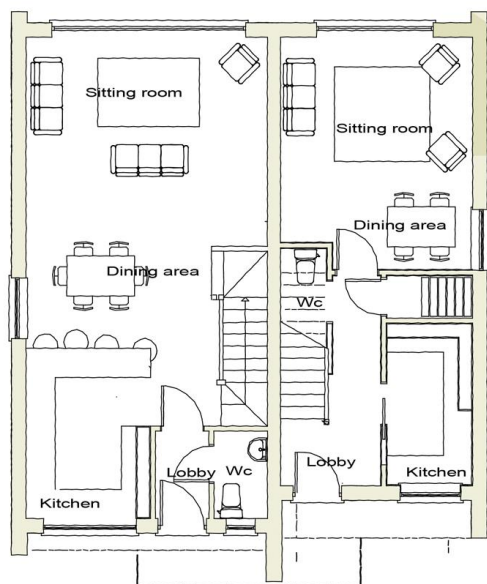
Situated on the outskirts of Bembridge village we are pleased to offer a pair of brand new, new build semi detached houses, offering the choice of either a three bedroom house or a two bedroom house.

Both of these properties will benefit from down stairs cloakrooms and upstairs bathrooms, as well as designated off road parking and good size rear gardens that will be both private and enclosed.

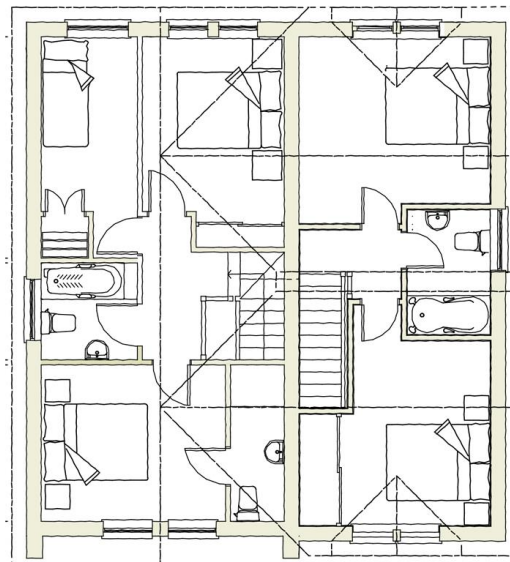
Just a short walk from your front door you are able to walk down to the local convenience store or you could venture into the heart of the village where you will find lots of exciting fresh local produce, the local bakery is phenomenal, award winning sausage rolls from DW Jarvis butchers and a choice of fresh crab along the harbours edge.

There are also a variety of local pubs and restaurants to choose from for that meal out, and a short stroll to the beach.

What the owner says...



Ground Floor Plan



First Floor Plan

For directions to this property please contact us.

Viewing: Strictly by appointment with Fine & Country's offices in:

Isle Of Wight on 01983 520000

28 St James Street, Newport, Isle Of Wight, PO30 1HY
isleofwight@fineandcountry.com

London office

121 Park Lane, Mayfair, London, W1K 7AG