



Whispers
Walkers Lane | Shorwell | Isle of Wight | PO30 3JZ

FINE & COUNTRY

Seller Insight



We moved here some 24 years ago and have thoroughly enjoyed our home but feel it is now time to downsize. In 2002 we created the extension which we are very proud of and it provided additional living accommodation for an elderly family member.

We love Shorwell village as it has a very friendly community atmosphere and we are just opposite the 300 year old Grade II Listed pub, with a pond full of brown trout and near the twelfth century church, as well as nearby bus stops. Northcourt Manor in the village is the largest manor house on the island and was built in 1615 and every year holds a summer fair in the grounds. The Wolverton Blues Festival is a short walk away, and the Parish Hall hosts many community events. The Recreation ground is close by, with play facilities for little ones. Shorwell is also home to the oldest netball and Sunday football clubs on the island. There are also wonderful places to go for walks and five minutes away there are views from the hills where we can see great views of the sea. A few minutes drive away lies Brighstone village with shops, a doctor's surgery, primary school and a nursery.

It is only about five miles to Newport which is the county town of the Isle of Wight and includes a variety of high street stores and independent shops as well as wide selection of restaurants and bars. There is a weekly Isle of Wight Farmers Market and a number of primary and secondary schools within the vicinity. We are not far from the stunning Compton Beach and the walks or cycle rides along the Downs towards Freshwater are a real pleasure while the Newport Golf Club is available for golfing enthusiasts.

There are plenty of local attractions including a museum, a Roman Villa and the Quay Arts Centre as well as the famous Carisbrook Castle and Queen Victoria's Osborne House. A variety of annual events take place in the area including the world famous Isle of Wight festival."

* These comments are the personal views of the current owner and are included as an insight into life at the property. They have not been independently verified, should not be relied on without verification and do not necessarily reflect the views of the agent.





Step inside

Whispers

This delightful and extended family home is located in the charming village of Shorwell, just 10 minutes from the county town of Newport. It is set back from the road and accessed via a driveway flanked by a front lawn that leads to the garage and provides space for three or four cars.

The house includes some lovely internal features such as dado rails and coved ceilings as well as a delightful herringbone parquet flooring in the entrance hall and into the downstairs bedroom. There is an understairs cloakroom and a door to the dual aspect lounge with a cosy log burner and access to the semi open plan kitchen/dining area. The kitchen/breakfast area has a range of attractive units incorporating a double oven, induction hob and dishwasher as well as a free standing fridge freezer and a pantry/utility room. The light and bright, dual aspect dining area in the extension is the 'piece de resistance' of this property. With its high, vaulted ceiling, Velux windows, French doors to the terrace and room for an additional seating area it is where the family spend much of their time.

Part of the extension incorporates a double bedroom with an en suite shower room and an independent external door and access with a ramp and steps into the garden, so this can always be used as an 'annex' for an elderly relative or adult family member. The ground floor also includes a study/sixth bedroom so offers plenty of flexible accommodation. Off the first-floor galleried landing there is a family bathroom and four bedrooms, including the main bedroom with an en suite double shower room and a wall of free standing wardrobes.

The rear south facing garden consists of a lovely raised and balustraded decked terrace where you can enjoy al fresco dining and relaxing in the sunshine. Much of the rest of the garden is laid to lawn with shrub borders, a banana tree, rose bushes and a vegetable plot as well as a charming Wendy house at the end of the garden.







Travel Information

9.7 miles from Yarmouth to Lymington Ferry Terminal
10.1 miles from Fishbourne to Portsmouth Ferry Terminal
10.5 miles from West Cowes to Southampton Ferry Terminal

Southern Vectis Buses routes provide regular services through the area, connecting you to all the areas of the island. For ticket prices visit www.islandbuses.info

Leisure Clubs & Facilities

| | |
|---|-----------|
| Medina Leisure Centre, Newport | 6.1 miles |
| Freshwater Bay Golf Club, Freshwater | 8 miles |
| Isle of Wight County Cricket Ground, Blackwater | 6 miles |
| West Wight Sports Centre, Freshwater | 9.3 miles |

Healthcare

| | |
|--|--------------|
| Doctors Surgeries | |
| Brighstone Surgery, Brighstone | 01983 740219 |
| Brookside Health Centre, Freshwater | 01983 758998 |
| Carisbrooke Health Centre, Carisbrooke | 01983 522150 |
| Medina Health Care, Newport | 01983 522198 |
| Pyle Street Surgery, Newport | 01983 523525 |

| | |
|---|---------------------------|
| General Hospitals | |
| St Mary's Hospital, Parkhurst Ryde, Newport | 6.5 miles 01983 822099 |

Education

| | |
|---|--------------|
| Primary Schools | |
| Brighstone CE Primary School, Brighstone | 01983 740285 |
| Shalfleet CE Primary School, Shalfleet | 01983 760269 |
| Carisbrooke CE Primary School, Carisbrooke | 01983 522348 |
| St Thomas Of Canterbury Primary School, Carisbrooke | 01983 522747 |

| | |
|---|--------------|
| Newport CE Primary School, Newport | 01983 522826 |
| Hunnyhill Primary School, Newport | 01983 522506 |
| Chillerton & Rookley Primary School, Chillerton | 01983 721207 |

| | |
|--|---------------|
| Secondary Schools/Colleges | |
| Carisbrooke College, Carisbrooke | 01983 524651 |
| Christ The King Upper College, Newport | 01983 537070 |
| Medina College, Newport | 01983 861222 |
| Ryde Academy, Ryde | 01983 567331 |
| The Island VI Form, Newport | 01983 522886 |
| The Isle of Wight College, Newport | 01982 526 631 |

| | |
|--|---------------|
| Assisted Learning Schools | |
| Medina House, School Lane, Newport | 01983 522 917 |
| St. Georges, Watgate Road, Newport | 01983 524 634 |
| Clatterford Tuition Centre, Newport | 01983 524 680 |
| Thompson House Tuition Centre, Newport | 01983 539 967 |

Entertainment

Restaurants / Bars
The Crown Inn, Shorwell
Three Bishops Inn, Brighstone
The Sun Inn, Hulverstone
Horse & Groom, Ningwood
Wight Mouse Inn, Chale
The Sun Inn, Calbourne
The Horse & Groom, Shalfleet
The Llama Tree Bistro & Pizzeria, Ningwood
The Cow, Tapnell

These bars and restaurants are available within a 15-minute drive of this home.

Local Attractions / Landmarks

Isle of Wight Pearl Centre, Brighstone
Blackgang Chine, Blackgang
Tapnell Farm, Yarmouth
Fort Victoria Country Park, Norton
St Catherine's Oratory, Niton
The Needles Landmark Attraction, Alum Bay
Carisbrooke Castle, Carisbrooke
Tapnell Farm Park, Yarmouth
Farringford House (Home of Lord Tennyson), Freshwater

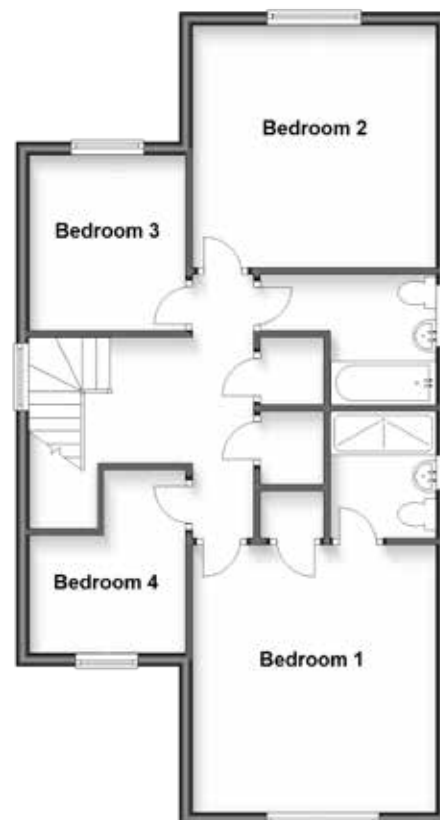
Ground Floor

Approx. 103.9 sq. metres (1118.7 sq. feet)



First Floor

Approx. 69.8 sq. metres (751.4 sq. feet)



GROUND FLOOR

| | |
|----------------------|--------------|
| Entrance Porch | |
| Hallway | |
| Cloakroom | |
| Lounge | 24'11 x 12'8 |
| Kitchen | 16'1 x 8'4 |
| Larder | |
| Dining Area | 13'4 x 12'9 |
| Study / Bedroom 6 | 15'1 x 7'4 |
| Bedroom 5 | |
| En-Suite Shower Room | 7'6 x 3'10 |

FIRST FLOOR

| | |
|----------------------|--------------|
| Landing | |
| Bedroom 1 | 14'1 x 12'8 |
| En-Suite Shower Room | 6'6 x 5'6 |
| Bedroom 2 | 12'10 x 12'8 |
| Bedroom 3 | 9'6 x 8'1 |
| Bedroom 4 | 9'1 x 8'1 |
| Bathroom | 6'10 x 5'6 |

OUTSIDE

Front Garden
Driveway Parking
Garage
Raised Decking Area
Rear Garden



Council Tax Band: E
Tenure: Freehold



Fine & Country
Tel: +44 (0)1983 520000
isleofwight@fineandcountry.com
28 St James Street, Newport, Isle of Wight PO30 1HY

F&C
fineandcountry.com™